



## AEROSPACE APPLICATIONS

### 航空航天行业应用



Soudax specialized in the manufacture of high quality resistance welding equipment and hand tools for honeycomb, ball tack, and tack welding.

Soudax has been in business since 1973 and works closely with all of the major aircraft engine manufacturers. This equipment is commonly used to position and hold parts together before brazing, a process that is widely accepted in component OEM and MRO.

- Soudax专注开发蜂窝定位焊接、球定位焊及定位焊生产用的高品质精密电阻焊设备及手动工具。
- Soudax自1973年以来即与各大飞机发动机制造商紧密合作,该品牌设备已普遍用于钎焊前的定位及局部紧固,相关工艺已被航空发动机制造及维修厂家广泛接受。

### 小球定位焊 | Ball Tack Welding

There are many advantages over manual GTAW (TIG) welding and strapping processes. There is no base metal distortion and parts are positioned perfectly without the chance of movement between work cells.

- 与手工钨极氩弧焊 (TIG) 和捆扎工艺相比,小球定位焊存在许多优势:母材金属无变形,且部件定位精确,工件间无位移。



Vanes  
叶片



Air Foils  
导流片



Tubes and Manifolds  
管件和歧管 (进气排气)





# Soudax

## 典型产品 Equipment used



Capacitor discharge generator 100J or 300J  
GDC100J 或 300J 电容储能焊机



Vacuum welding pen, 5 or 10 DaN  
5DaN 或 10DaN 真空焊接笔

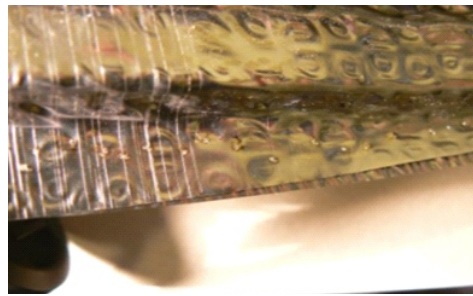


Vacuum Pump  
真空泵

## 定位焊 | Tack Welding



Sheet metal components  
钣金件



Thermal blanket / Heat shields  
隔热层 / 热防护

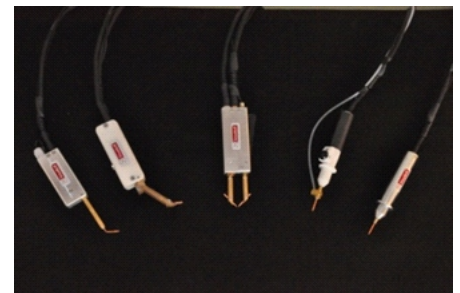
## 典型产品 Equipment used



Capacitor discharge generator 100J or 300J  
GDC100J 或 300J 电容储能焊机



A/C Generator 3, 4 or 20kA  
交流焊机GAC 3, 4 或20kA



Welding pens or welding clamps  
手动工具：焊接笔或焊接夹具

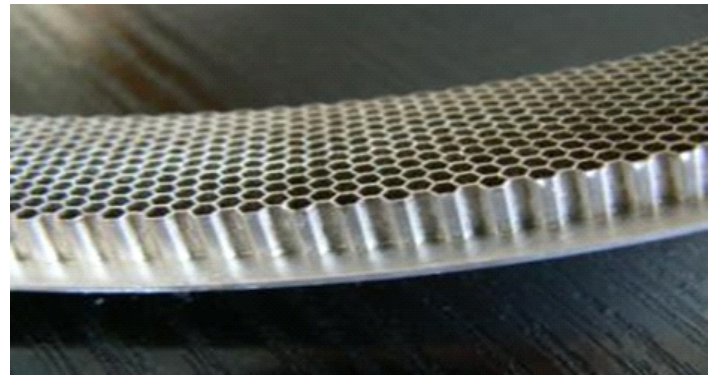




## 蜂窝定位焊 | Honeycomb Tack Welding

Medium frequency generators provide more stable currents, higher production rates, greater flexibility in the adjustment of parameters, and fewer burn marks. This generator can also be used for ball tack welding and tack welding.

- 中频逆变焊机GMF系列可提供更稳定的电流，更高的生产率，在参数调整时有更大的灵活性，更少的烧痕。此焊机同样可用于小球定位焊和定位焊。



### 典型产品 Equipment used



Medium Frequency Generator

15V 15kA 2000Hz

电源：中频逆变焊机 GMF 15V 15kA 2000Hz



Pneumatic Welding Head 60 DaN

气动焊接头 60 DaN

