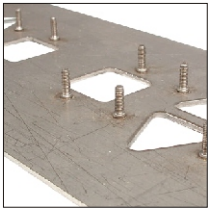




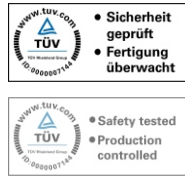
PS-6A



符合DIN EN ISO 13918标准的带法兰螺柱可实现半自动及全自动送钉。



Semi-automatic and fully automatic feed of studs with flange as per DIN EN ISO 13918.



操作简单、耐用且极其坚固的PS-6A自动螺柱焊枪适合在恶劣环境下连续运行。特别适合生产高质量的焊缝的场合，最大可焊接M8的螺柱和销钉，且安全、快捷。

The user-friendly, durable and extremely robust PS-6A automatic stud welding gun is ideal for continuous operation under the toughest conditions. It is particularly suitable for the production of high-quality welds and allows the safe and lightning-fast welding of studs and pins up to M8.

PS-6A 技术参数 Technical Data	
焊接范围	直径为M3-M8或Ø 2-8 mm及长度为6-35 mm的螺柱和销钉
Welding range	Studs and pins from M3-M8 or 2-8 mm in diameter and 6-35 mm in length.
焊接材质	碳钢、不锈钢、铝和铜合金
Material	Steel, stainless steel, aluminium and brass.
焊接电缆及控制线缆	5 m 高柔性
Welding and control cables	5 m highly flexible
总长度 (含喷嘴)	145 mm
Total length with support tube	145 mm
总高度 (含手柄)	140 mm
Total height above grip	140 mm
总宽度	50 mm (喷嘴: Ø 30 mm / 选配: Ø 20 mm)
Total width	50 mm (support tube: Ø 30 mm / option: Ø 20 mm)
重量	0.4 kg (不含线缆)
Weight	0.4 kg without cable

技术规格如有变更，恕不另行通知。 | 请关注www.soyer.com.cn，获取更多信息。

